



TAU 20|20

The superior choice
in imaging

ANATOMY REVEALED.

1. LIVE IMAGE SIZE | Expect exceptional diagnostic imagery with a 33cm x 33cm live image to see fine details of anatomy with vivid clarity.

2. 27" MONITOR | With the largest screen on a mini, experience optimal eye comfort on a hi-bright, 1920 x 1080 resolution monitor.

3. ORTHOTOUCH™ | Advanced touchscreen interface.



Color interface



Anatomical selections



Touch support



Pediatric software

4. ON-SCREEN HELP | Description of common system functions available directly on-screen.

5. MONITOR ARM | Allows for easy adjustment of monitor and keyboard for viewing of anatomy while sitting or standing.

Intelligent Dose Reduction

Do more. Dose less.

At Orthoscan, we understand your concern about radiation exposure and the demand for high-quality images. That's why the TAU family includes cutting-edge Intelligent Dose Reduction technology that provides the best in diagnostic image quality while reducing exposure to you and your patients.

IMAGING, EVOLVED.

Detector Size

Bigger detector.
Bigger possibilities.

Over twice the size of detectors found on conventional mini C-arms*, Orthoscan TAU 2020 blurs the line between mini and full size. Confirm joint space with accuracy, see fractures in full view, and save dose by minimizing shots so you can work efficiently. Combined with pediatric indication, image anatomy in ways never before possible on a mini C-arm.



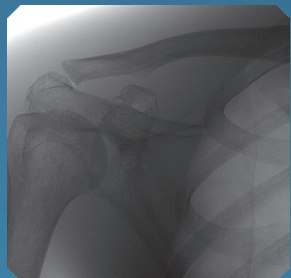
20cm

20cm

Stepless (Motorized) Collimator

Seamless collimation
for the perfect shot

Introducing the industry's first stepless motorized collimator in a mini C-arm. With a touch of a finger, users can infinitely adjust via the touchscreen interface to minimize radiation exposure and reduce patient dose, while limiting the area of interest. Improved contrast and detail-rich images provide users a clear image for an accurate diagnosis.



Shoulder Imaging



Foot Imaging



Knee Imaging



Elbow Imaging



Hand Imaging



PEDIATRIC INDICATION

Designed for use with pediatric patients



KEEPING IT MINI

Light weight & compact design simplifies transportation & storage



SURGICAL LED LIGHTS

Provides additional illumination on the anatomy



FLEXIBILITY

Increased orbital rotation of 160°, larger arc depth of 50.8cm & improved umbilical cable



PULSED FLUOROSCOPY

- Selectable pulse rates of 30, 15, & 7.5 pulses per second
- Dose reduction without loss of image quality



OPTIMIZED DOSE FILTER

- Only mini C-arm with pediatric indication
- Reduced dose while maintaining image quality
- Reduced exposure to surgeons & patients



NEXT GENERATION FLAT PANEL DETECTOR

- Increased workflow & efficiency
- Improved image brightness & quality
- Dose reduction & decreased ramp time

Up to
86%
Cumulative
Dose Reduction
can be achieved*

MONITOR

Display size	27" LCD
Primary "live" image	33cm x 33cm
Dual reference image	15.2cm x 15.2cm
HDMI	✓

DETECTOR

Type	Flat Panel Detector
Image resolution	1900 x 1900
Pixel spacing	99 Microns

X-RAY GENERATOR

kV range	40 - 78 kVp
mA range	0.040 - 0.160 mA
Selectable pulse rate	30, 15, 7.5, 2 pps

ELECTRICAL

Sterile field controls	Bilateral
Multifunction wireless foot switch	✓
Laser alignment	✓
Surgical LED lights	✓

DOCUMENTATION

Wireless communication	Optional
DICOM 3.0 compliant	✓
Printer	✓

MECHANICAL

Weight	215.5kg
Height	121.9cm
Footprint (W x L)	73.7cm x 83.9cm



1. IMPROVED BILATERAL CONTROLS | New back-lit controls are easier to see with additional buttons for upgraded functionality in the sterile field.

2. USER-FRIENDLY CONNECTIVITY | Easy access to the power button and I/O ports directly on top of the chassis.

3. THREE-WAY BRAKE CONTROL | Maneuver your system with ease down hallways, around corners, and in the operating room.

4. INTEGRATED CABLE PUSHERS | Protects power cords and other cables from being damaged.

+ UPGRADED SERVICEABILITY | Redesigned from the inside out to reduce service maintenance time.

+ ENHANCED SECURITY | Keep your equipment and data safe in the modern healthcare environment.



www.orthoscan.com

1+ 480.503.8010

1+480.503.8011

14555 N 82nd St. Scottsdale, AZ 85260, United States

Orthoscan and Orthotouch™ are registered trademarks of Orthoscan, Inc. Product features and specifications are subject to change without notice. 110-2221 Rev A, 10/19/2022 © 2022 Orthoscan, Inc. * Compared to 12cm x 15cm detectors. † Using Intelligent Dose Reduction (with Optimized Dose Filter) when compared to Orthoscan 1000-0004-FD. In clinical practice, the use of IDR may reduce patient dose depending on the clinical task, patient size, anatomical location, and clinical practice. A consultation with a radiologist and a physicist should be made to determine the appropriate dose to obtain diagnostic image quality for the particular clinical task.

