



TAU 15|15

Upgrade your
expectations

ANATOMY REVEALED.

- 1. LIVE IMAGE SIZE** | Expect exceptional diagnostic imagery with a 30.5cm x 30.5cm live image to see fine details of anatomy with vivid clarity.
- 2. 27" MONITOR** | See more on-screen content with a resolution of 1920 x 1080 in bright detail for an immersive imaging experience.
- 3. ORTHOTOUCH™** | Advanced touchscreen interface.
- 4. ON-SCREEN HELP** | Description of common system functions available directly on-screen.
- 5. MONITOR ARM** | Allows for easy adjustment of monitor and keyboard for viewing of anatomy while sitting or standing.



Color interface



Anatomical selections



Touch support



Pediatric software

Intelligent Dose Reduction

Do more. Dose less.

At Orthoscan, we understand your concern about radiation exposure and the demand for high-quality images. That's why the TAU family includes cutting-edge Intelligent Dose Reduction technology that provides the best in diagnostic image quality while reducing exposure to you and your patients.

IMAGING, EVOLVED.

Detector Size

Capture more anatomy in one shot

With a 15cm x 15cm detector, Orthoscan TAU 1515 provides 25 - 33% larger surface area compared to conventional mini C-arms*. Keep your focus on the patient and not the equipment by achieving preferred views with fewer shots, improving your work flow and reducing exposure to you and your patients.

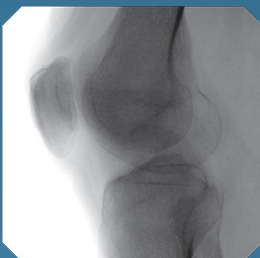
Flexibility

A mini C-arm that works with you, not against you

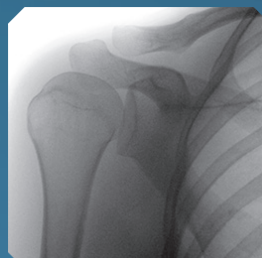
With an increased orbital rotation of 160°, a larger arc depth of 50.8cm, and an integrated umbilical cable; Orthoscan TAU 1515 combines high versatility with increased articulation. Improve your work flow and efficiency with minimal adjustments, allowing you to effortlessly maneuver in the surgical field with just a turn of the wrist.



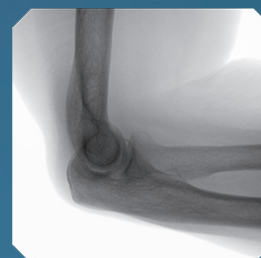
Foot Imaging



Knee Imaging



Shoulder Imaging



Elbow Imaging



PULSED FLUOROSCOPY

- Selectable pulse rates of 30, 15, & 7.5 pulses per second
- Dose reduction without loss of image quality



OPTIMIZED DOSE FILTER

- Only mini C-arm with pediatric indication
- Reduced dose while maintaining image quality
- Reduced exposure to surgeons & patients



NEXT GENERATION FLAT PANEL DETECTOR

- Increased workflow & efficiency
- Improved image brightness & quality
- Dose reduction & decreased ramp time



PEDIATRIC INDICATION

Designed for use with pediatric patients



KEEPING IT MINI

Light weight & compact design simplifies transportation & storage



SURGICAL LED LIGHTS

Provides additional illumination on the anatomy



CONNECTIVITY

Easily access the power button & I/O ports directly on top of the chassis

Up to
79%
Cumulative
Dose Reduction
can be achieved*

MONITOR

Display size	27" LCD
Primary "live" image	30.5cm x 30.5cm
Dual reference image	12.7cm x 12.7cm
HDMI	✓

DETECTOR

Type	Flat Panel Detector
Image resolution	1400 x 1400
Pixel spacing	100 Microns

X-RAY GENERATOR

kV range	40 - 78 kVp
mA range	0.040 - 0.160 mA
Selectable pulse rate	30, 15, 7.5, 2 pps

ELECTRICAL

Sterile field controls	Bilateral
Multifunction wireless foot switch	✓
Laser alignment	✓
Surgical LED lights	✓

DOCUMENTATION

Wireless communication	Optional
DICOM 3.0 compliant	✓
Printer	✓

MECHANICAL

Weight	215.5kg
Height	121.9cm
Footprint (W x L)	73.7cm x 83.9cm



ADDITIONAL FEATURES.

1. IMPROVED BILATERAL CONTROLS | New back-lit controls are easier to see with additional buttons for upgraded functionality in the sterile field.

2. THREE-WAY BRAKE CONTROL | Maneuver your system with ease down hallways, around corners, and in the operating room.

3. INTEGRATED CABLE PUSHERS | Protects power cords and other cables from being damaged.

+ UPGRADED SERVICEABILITY | Redesigned from the inside out to reduce service maintenance time.

+ ENHANCED SECURITY | Keep your equipment and data safe in the modern healthcare environment.



www.orthoscan.com 480.503.8010 480.503.8011 14555 N 82nd St. Scottsdale, AZ 85260

Orthoscan and Orthotouch are registered trademarks of Orthoscan, Inc. Product features and specifications are subject to change without notice. 110-2225 Rev A, 10/19/2022 © 2022 Orthoscan, Inc.
* Compared to 12cm x 15cm detectors and 13cm x 13cm detectors. † Using Intelligent Dose Reduction (with Optimized Dose Filter) when compared to Orthoscan 1000-0004-FD. In clinical practice, the use of IDR may reduce patient dose depending on the clinical task, patient size, anatomical location, and clinical practice. A consultation with a radiologist and a physicist should be made to determine the appropriate dose to obtain diagnostic image quality for the particular clinical task.

